



# Installation Instructions

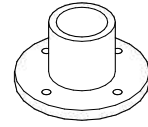
## **Attic Ladder Barrier**



2x Elbow



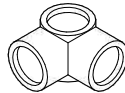
2x Three Way Top Corner



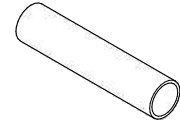
4x Base Flange



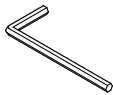
2x Short Tee



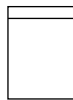
2x Three Way Mid Corner



4x Pipe Vertical Posts (1000mm)  
2x Pipe Side Rails (1500mm)  
2x Pipe End Rails (800mm)



1x Allen Key



1x Bag Fixings

## Instructions

Assemble the 4 vertical posts and pipe clamps in the correct position as per the diagram.

Set the short tee's and three way mid corner's in the middle of the vertical posts.

Make sure the pipe and clamps are set at the same position on both sides.

Insert the side and end rails into the pipe clamps.

Make sure all pipe clamps are securely fastened.

Using the fixings supplied screw the 4 base flanges into the floor.

